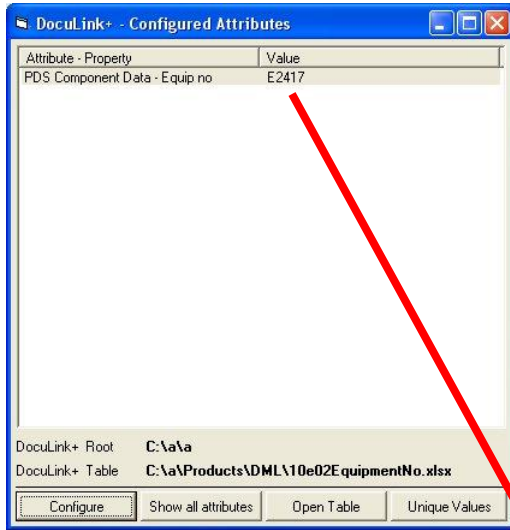


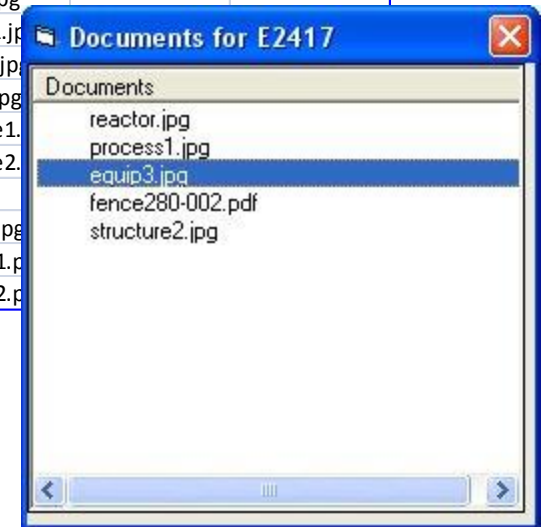
How does *DocuLink+* work?



- KEY NavisWorks Property Attribute Values are held in 1st field in a separate Excel 'Table' created by the user
- "E2417" is value of KEY attribute in this example
- SQL search on table retrieves all drawing files associated with KEY attribute
- If files exist in the **DocuLink+** 'Root' folder then they are displayed in list

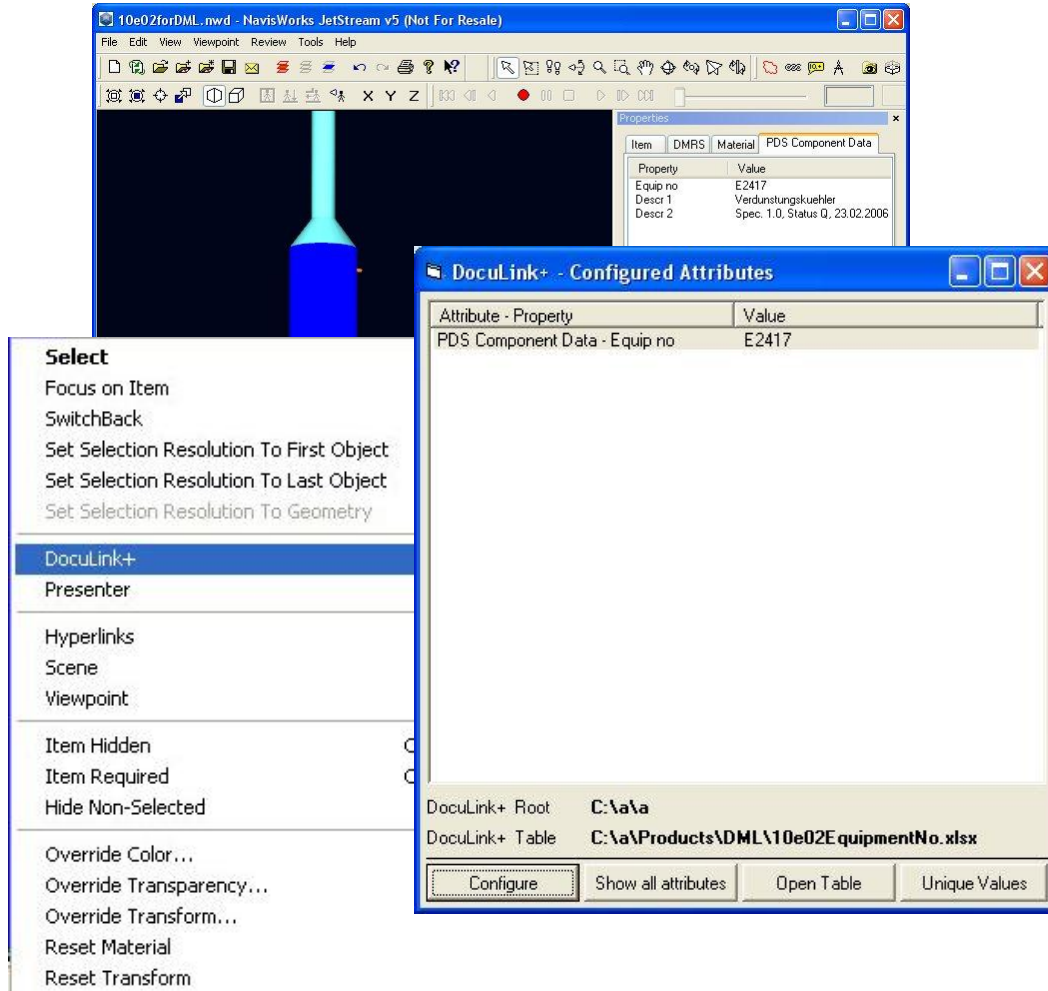
Tables can be user or department or process specific

Equip no	Drawing1	Drawing2	Drawing3	Drawing4	Drawing5	Drawing6
A2626A	door.pdf	fence280-002.p	pumps1.jpg	elevatorCC1215	window2.pdf	window1.pdf
A2626B	equip1.jpg	door.pdf	fence280-002.p	pumps1.jpg		
C1161A	equip2.jpg	equip1.jpg	door.pdf			
C1161B	equip3.jpg	equip2.jpg	equip1.jpg	door.pdf		
D8434	process1.jpg	equip3.jpg	equip2.jpg	equip1.jpg	structure1.jpg	reactor.jpg
E2417	reactor.jpg	process1.jpg	equip3.jpg	fence280-002.p	structure2.jpg	
E2617	reactor.jpg	pumps1.jpg	process1.jpg	equip3.jpg		
E2618	structure1.jpg	reactor.jpg	pumps1.jpg	process1.jpg		
E3421	structure2.jpg	structure1.jpg	reactor.jpg	pumps1.jpg		
E3429	test.pdf	structure2.jpg	structure1.jpg	reactor.jpg		
P2466A	vessel3.jpg	test.pdf	structure2.jpg	structure1.		
Verdunstungsk	window1.pdf	vessel3.jpg	test.pdf	structure2.		
P2467A	window2.pdf	window1.pdf	vessel3.jpg	test.*		
P2467B	window3.pdf	window2.pdf	window1.pdf	vessel3.jpg		
P8462A	elevatorCC1215	window3.pdf	window2.pdf	window1.p		
P8462B	fence280-002.p	elevatorCC1215	window3.pdf	window2.p		



Using *DocuLink+*

‘Right Click’ on selected item in Selection Tree or Viewing window to select and open *DocuLink+* from menu



- Shows only currently ‘configured’ Property attributes
- ‘Show all attributes’ to see all attributes for selected item
- Shows attributes of all components if multiple items are selected in NW
- Unique attributes only can be displayed
- Attributes and Values can be sorted using header bars
- Currently selected Table can be opened to display all documents available
- Configure enables a new set of Property attributes to be used

Using *DocuLink+*

Select attribute from list to display list of referenced documents

DocuLink+ - Configured Attributes

Attribute - Property	Value
PDS Component Data - Equip no	E2417

Documents for E2417

Documents

- reactor.jpg
- process1.jpg
- equip3.jpg
- fence280-002.pdf
- structure2.jpg

DocuLink+ Root C:\a\va
DocuLink+ Table C:\a\Products\DML\10e02Equipr

Configure Show all attributes Open Table

Ready

equip3.jpg - Windows Picture and Fax Viewer

Arkiteconix 2010

Using *DocuLink+*

Configuring *DocuLink+*

- The list of attributes shown can be configured by the user based on any saved Search or Selection set in NW
- The Configure dialog uses the Concatenation of Search Set Attribute functionality (as in Surveyor) for NW
- Allows for minimum set of Attributes to be shown for different Entity types with a single setting
- The **DocuLink+ Root** box locates where all documents are held
- The **DocuLink+ Table** box locates where the current document Table is held

